

Respiratory Syncytial Virus Incidence and Severity in a Community-Based Prospective Cohort of Children Aged 0–14 Years

Matthew Smith,^{1,a} John Kubale,^{2,a} Guillermina Kuan,^{3,4} Sergio Ojeda,^{3,4} Nivea Vydiswaran,¹ Nery Sanchez,^{3,4} Lionel Gresh,⁴ Krista Latta,¹ Roger Lopez,^{4,5} May Patel,¹ Angel Balmaseda,^{4,5} and Aubree Gordon^{1,6}

¹Department of Epidemiology, School of Public Health, University of Michigan, Ann Arbor, Michigan, USA, ²ICPSR, Institute for Social Research, University of Michigan, Ann Arbor, Michigan, USA, ³Health Center Sócrates Flores Vivas, Ministry of Health, Managua, Nicaragua, ⁴Sustainable Sciences Institute, Managua, Nicaragua, and ⁵Centro Nacional de Diagnóstico y Referencia, Ministry of Health, Managua, Nicaragua

Background. Respiratory syncytial virus (RSV) is a substantial source of severe illnesses including acute lower respiratory infections (ALRIs) like pneumonia. However, its burden in older children remains less well understood.

Methods. Using a community-based prospective cohort, we assessed the burden of symptomatic reverse-transcription polymerase chain reaction–confirmed RSV among Nicaraguan children aged 0–14 years from 2011 to 2016. ALRI was defined as physician diagnosis of pneumonia, bronchiolitis, bronchitis, or bronchial hyperreactivity.

Results. Between 2011 and 2016, 2575 children participated in the cohort. Of these, 630 (24.5%) had at least 1 episode of symptomatic RSV and 194 (7.5%) had multiple episodes. Subtype was identified in 571 (69.3%) episodes with 408 (71.5%) RSV-A, 157 (27.5%) RSV-B, and 6 (1%) positive for both. Children aged <2 years displayed the highest incidence of symptomatic RSV, with 269.3 cases per 1000 person-years (95% confidence interval [CI], 242.1–299.5). Beyond 2 years, incidence (95% CI) of symptomatic RSV decreased rapidly: 145.6 (129.9–163.1), 37.9 (31.9–45.0), and 19.3 (14.9–25.0) cases per 1000 person-years among children aged 2–4, 5–9, and 10–14 years, respectively. Incidence of RSV-associated ALRI was highest in children aged <2 years (85.95 per 1000 person-years [95% CI, 71.30–103.61]): 2.1, 9.5, and 17.3 times that of participants aged 2–4, 5–9, and 10–14 years, respectively. Children <2 years old were significantly more likely to have an RSV-associated hospitalization ($P < .001$).

Conclusions. There is a substantial burden of symptomatic and severe RSV in children. While older children did present with RSV, the rates of symptomatic and severe RSV decreased by as much as 95% beyond age 5.

Keywords. child health; cohort study; incidence rate; Nicaragua; respiratory syncytial virus; RSV.

Among children aged <5 years, respiratory syncytial virus (RSV) is the most common pathogen associated with acute lower respiratory infections (ALRIs) [1, 2]. In 2019, an estimated 33 million episodes of RSV-associated ALRI (RSV-ALRI) led to 101 400 deaths among children younger than 5 years, with >95% of RSV-ALRI and >97% of deaths occurring in low- and middle-income countries (LMICs) [3]. Most cases of severe RSV occur among previously healthy children [4, 5].

An estimated 97% of children are infected with RSV by the age of 2 years, but protection following infection is often incomplete

and short in duration [6, 7]. Although symptoms in older children are less severe, these infections can be responsible for household transmission to younger siblings [8–10]. Children aged <6 months of age account for about 39% of hospitalizations and 45% of deaths among children aged <5 years [3]. These young children are more likely to experience serious respiratory disease due to their immature airway structure and immune system [11].

While there is currently no RSV vaccine available, many vaccine candidates and monoclonal antibodies are in clinical trials [12]. To optimize vaccine implementation and distribution, strategies will need to rely on a clear picture of RSV burden worldwide. There exists a high and widely unmeasured burden of community RSV among children in LMICs, particularly among children aged >5 years [13]. Addressing this gap is of particular importance given the substantial changes in RSV burden and seasonality that have been observed since the start of the coronavirus disease 2019 pandemic. Establishing the prepandemic burden of RSV, particularly in older children, will help us better understand the effects of this pandemic on other important respiratory viruses like RSV. We have previously shown a high incidence of symptomatic and severe

Received 01 September 2022; editorial decision 28 October 2022; accepted 01 November 2022; published online 8 November 2022

^aM. S. and J. K. contributed equally to this work.

Correspondence: Aubree Gordon, PhD, School of Public Health, University of Michigan, 1415 Washington Heights, Ann Arbor, MI 48109 (gordonal@umich.edu).

Open Forum Infectious Diseases®

© The Author(s) 2022. Published by Oxford University Press on behalf of Infectious Diseases Society of America. This is an Open Access article distributed under the terms of the Creative Commons Attribution-NonCommercial-NoDerivs licence (<https://creativecommons.org/licenses/by-nc-nd/4.0/>), which permits non-commercial reproduction and distribution of the work, in any medium, provided the original work is not altered or transformed in any way, and that the work is properly cited. For commercial re-use, please contact permissions@oup.com

<https://doi.org/10.1093/ofid/ofac598>

RSV in Nicaragua, among children aged <2 years in a separate cohort [14]. We aim to add to our current understanding of RSV burden in LMICs by assessing RSV incidence, subtype, and disease severity among children aged 0–14 years in a community-based cohort in Nicaragua.

METHODS

Study Population

The Nicaraguan Pediatric Influenza Cohort Study (NPICS) is an ongoing community-based prospective cohort study. Nicaragua is a tropical country in Central America of approximately 6.8 million people, of whom >1.2 million live in the Managua area [15]. Our analysis examines the period from January 2011 through December 2016. The study is described in detail by Gordon et al [16]. Participants were enrolled through the Health Center Sócrates Flores Vivas (HCSFV) in District II of Managua, Nicaragua. Study participants are children aged 0–14 years. Initial enrollment was done through random selection of children 3–11 years old previously enrolled in the Nicaraguan Influenza Cohort Study conducted between 2007 and 2010 [17]. Additional children ≤2 years old were enrolled in NPICS from home visits in 2011. Since that time, infants aged ≤4 weeks have been enrolled on a continual basis. Children age out of the cohort at their 15th birthday.

Data Collection

Clinical history, sociodemographic surveys, and household surveys were collected at enrollment. Surveys were conducted, and a blood sample collected, in March/April of each year.

Respiratory Sample Collection and Testing

Parents agreed to bring their children in to HCSFV upon the first indication of fever/feverishness. A study physician recorded history of illness and current symptoms. Nasal and oropharyngeal swabs were collected from children ≥2 years of age if they had fever or reported fever along with rhinorrhea and/or

cough. Swabs were collected for children <2 years of age if they had fever or reported fever. Respiratory samples were also collected from any participants presenting to the study clinic with severe respiratory symptoms. RSV was detected by reverse-transcription polymerase chain reaction (RT-PCR) using the QIAamp Viral RNA Mini Kit (Qiagen Corporation, Valencia, California) using validated Centers for Disease Control and Prevention RT-PCR protocol [18].

Samples positive for RSV were later subtyped using a validated protocol [19]. However, stored samples from 2016 and earlier were destroyed in accordance with Nicaraguan polio eradication procedures, so sufficient volume to subtype all samples was not available.

Clinical Definitions

RSV was considered in all cases where a sample was positive for RSV by RT-PCR and without a previous RSV positive in the prior 14 days. ALRI was defined as physician diagnosis of pneumonia, bronchiolitis, bronchitis, or bronchial hyperreactivity. Pneumonia was diagnosed according to Nicaraguan Ministry of Health criteria, based on the Integrated Management of Childhood Illness guidelines [20]. Specifically, pneumonia was diagnosed in the following cases: children <2 months old and ≥60 breaths per minute, children 2–11 months old and ≥50 breaths per minute, children 12–59 months old and ≥40 breaths per minute, or children ≥60 months old and ≥25 breaths per minute. Severe ALRI was defined as ALRI along with a separate diagnosis of severe or very severe illness by a study physician. A participant was considered hospitalized if they were transferred to a hospital for care. If a case of ALRI, severe ALRI, or a hospitalization occurred within 14 days of symptom onset of a laboratory-confirmed RSV diagnosis, we considered it to be RSV associated.

Statistical Analysis

We calculated person-time as the number of days between participant enrollment and their exit from the study (at their 15th birthday, or when withdrawn, or lost to follow-up). For symptomatic RSV, this did not include the 14 days following a laboratory-confirmed RSV diagnosis, when participants were not considered at risk. Incidence rates and corresponding 95% confidence intervals (CIs) were calculated using a Poisson distribution in SAS version 9.4 (SAS Institute, Cary, North Carolina). Figures were created with R version 4.1.2 software (R Foundation for Statistical Computing). Pearson χ^2 and Fisher exact tests were used to compare the observed and expected distributions (assuming the viruses being compared were independent) of coinfections during periods of circulation and RSV subtype reinfections.

Patient Consent Statement

The Institutional Review Boards of the Nicaraguan Ministry of Health and the University of Michigan approved the study

Table 1. Characteristics of Pediatric Cohort Participants

Characteristic	Total (N = 2575)
Age at enrollment	
<2 y	972 (37.8)
2–4 y	539 (20.9)
5–9 y	743 (28.9)
10–14 y	321 (12.5)
Male sex	1269 (49.3)
Follow-up time, person-years, mean (SD)	3.8 (2.0)
No. of persons in household, mean (SD)	8.9 (4.7)
Dirt floor (n = 2252)	306 (13.6)
Mothers with secondary or tertiary education (n = 2449)	1833 (74.8)
Fathers with secondary or tertiary education (n = 2311)	1651 (71.4)

Data are presented as No. (%) unless otherwise indicated.

(HUM00088895). Parents/guardians of all participants provided written informed consent and verbal assent was obtained from children aged ≥ 6 years.

RESULTS

Between 2011 and 2016, 2575 children aged 0–14 years participated in the cohort (Table 1). About 4% of participants were withdrawn or lost to follow-up per year (Supplementary Table 1). The most common reasons for loss to follow-up were participants not showing up for annual sampling, inability to locate the participant's home, or the child had moved out of the study area. The mean follow-up time was 3.8 person-years (PY) and 49.3% of participants were male. A total of 6 children died while enrolled, with 1 of these deaths associated with an RSV infection—a 4-month-old child.

Incidence of RSV Illness

A total of 824 laboratory-confirmed RSV infections were identified, 340 of which were in children < 2 years old (Table 2). Six hundred thirty participants had at least 1 episode of laboratory-confirmed RSV, while 151 participants had multiple episodes. Children aged < 2 years displayed the highest incidence of symptomatic RSV with 269.3 cases per 1000 PY (95% CI, 242.1–299.5) (Figure 1A). The next highest incidence was seen in the age group 2–4 years (145.6 cases per 1000 PY [95% CI, 129.9–163.1]). The age groups 5–9 years and 10–14 years had successively lower RSV incidence at 37.9 (95% CI, 31.9–45.0) and 19.3 (95% CI, 14.9–25.0), respectively (Table 2).

RSV-Associated ALRI Infections and Hospitalizations

Children < 2 years old also displayed the highest incidence rates of RSV-associated outcomes: ALRI, severe ALRI, and hospitalizations (Table 2). Their incidence rate of RSV-ALRI was 85.9 per 1000 PY (95% CI, 71.3–103.6) compared to 41.3 per 1000 PY (95% CI, 33.4–51.1) in children aged 2–4 years (Figure 1B). Children aged 5–9 years and 10–14 years had the lowest incidence of RSV-ALRI at 9.1 (95% CI, 6.4–12.9) and 5.0 (95% CI, 3.0–8.3), respectively (Table 2). Similarly, cases of severe RSV-ALRI were also highest in children < 2 years old (11.7 per 1000 PY [95% CI, 7.1–19.4]). There were no cases

of severe RSV-ALRI in children aged ≥ 5 years throughout the entire study period. RSV-associated hospitalizations followed the same pattern with the highest incidence again seen in children < 2 years old (18.8 per 1000 PY [95% CI, 12.6–28.0]). There were 24 hospitalizations among children < 2 years old compared to 8 hospitalizations combined among children 2–14 years old. One RSV-associated death occurred in a child aged 4 months.

RSV Subtype and Seasonality

Among the 824 laboratory-confirmed RSV cases, 597 (72.5%) were successfully subtyped, with RSV-A identified in 408 (68.3%) cases and RSV-B identified in 184 (30.8%) cases (Supplementary Table 2). Both RSV-A and RSV-B were detected in 5 (0.8%) RSV cases. The odds of RSV-A were 1.6 times higher in initial RSV infections compared with reinfections for a single participant (95% CI, 1.02–2.27; $P = .04$; Supplementary Table 3). Among RSV-A cases, 23.3% had RSV-ALRI, 1.5% had severe RSV-ALRI, and 2.2% were hospitalized (Supplementary Table 2). Similarly, among RSV-B cases, 22.3% had RSV-ALRI, 1.9% had severe RSV-ALRI, and 2.5% were hospitalized.

The number of RSV cases peaked annually starting between July and September, with epidemics lasting 4–6 months (Figure 2). RSV-A was the predominant subtype circulating during 2011, 2012, and 2014 (Supplementary Table 4). RSV-B was more common in 2015, while RSV-A and RSV-B co-circulated equally in 2016. In 2013, 65 of 160 PCR-confirmed RSV infections (40.6%) were subtyped, which was the most incomplete year. Between 66.3% (in 2015) and 91.5% (in 2011) of RSV infections were subtyped in the other 5 years.

Coinfections

We assessed coinfection patterns between RSV infections and influenza A, influenza B, human metapneumovirus (hMPV), and human coronaviruses (HCoV). During weeks when pathogens were co-circulating, the number of RSV–influenza A ($P < .0001$, χ^2 test), RSV–influenza B ($P < .0001$, χ^2 test), and RSV–hMPV ($P = .0002$, χ^2 test) coinfections were lower than expected (Table 3). RSV–HCoV (OC43, 229E, NL63, or HKU1)

Table 2. Incidence of Crude and Severe Respiratory Syncytial Virus by Age Group

Age	RSV		RSV ALRI		RSV Severe ALRI		RSV Hospitalization	
	Cases	Incidence ^a	Cases	Incidence ^a	Cases	Incidence ^a	Cases	Incidence ^a
< 2 y	340	269.3 (242.1–299.5)	110	85.9 (71.3–103.6)	15	11.7 (7.1–19.4)	24	18.8 (12.6–28.0)
2–4 y	297	145.6 (129.9–163.1)	85	41.3 (33.4–51.1)	2	1.0 (.2–3.9)	6	2.9 (1.3–6.5)
5–9 y	129	37.9 (31.9–45.0)	31	9.1 (6.4–12.9)	0	0	2	0.6 (.2–2.3)
10–14 y	58	19.3 (14.9–25.0)	15	5.0 (3.0–8.3)	0	0	0	0

Abbreviations: ALRI, acute lower respiratory infection; RSV, respiratory syncytial virus.

^aIncidence rate per 1000 person-years (95% confidence interval) using Poisson distribution.

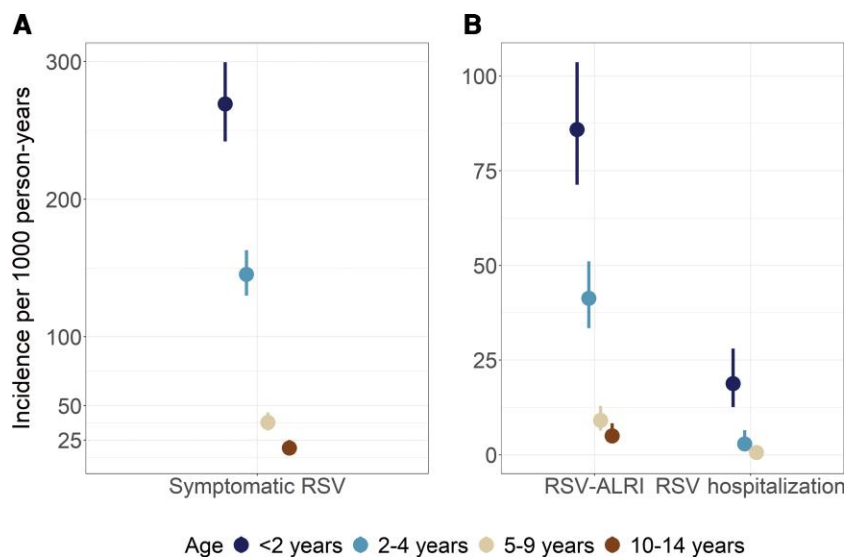


Figure 1. A, Incidence of symptomatic respiratory syncytial virus (RSV) by age group. B, Incidence of RSV-associated acute lower respiratory infection (ALRI) and hospitalizations by age group. No RSV-associated hospitalizations were observed in the age group 10–14 years. In both panels, vertical lines around point estimates are 95% confidence intervals, estimated using a Poisson distribution.

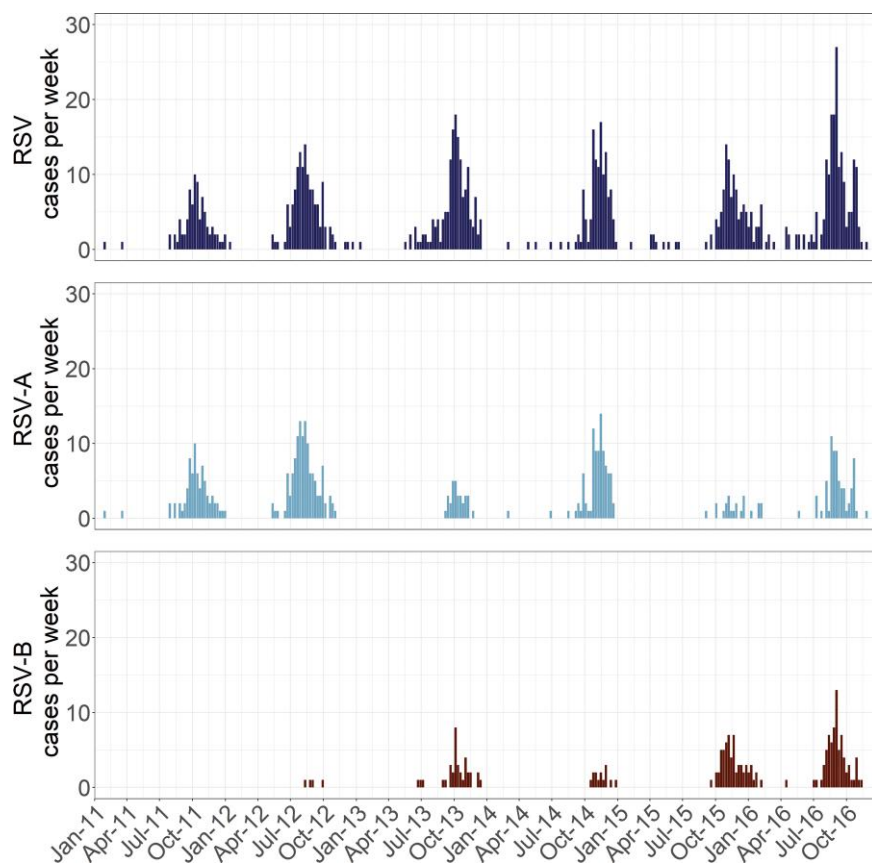


Figure 2. Number of all respiratory syncytial virus (RSV) cases (top), RSV-A cases (middle), and RSV-B cases (bottom) by study week, January 2011–December 2016.

Table 3. Actual Versus Expected Coinfections by Age Group

Coinfection	Age Group				
	All Ages	<2 y	2–4 y	5–9 y	10–14 y
RSV-IA					
Samples	3017	991	865	780	381
Actual coinfections	33	9	10	10	4
Expected coinfections	116	32	44	23	11
<i>P</i> value	<.0001	<.0001	<.0001	.0005	.0052
RSV-IB					
Samples	1458	465	373	412	208
Actual coinfections	10	0	1	7	2
Expected coinfections	37	5	12	12	5
<i>P</i> value	<.0001	.0151	<.0001	.103	.0664
RSV-hMPV					
Samples	2813	985	834	669	325
Actual coinfections	23	12	5	3	3
Expected coinfections	45	19	19	6	3
<i>P</i> value	.0002	.0722	.0002	.1613	.7253 ^a
RSV-HCoV					
Samples	4067	1452	1189	974	452
Actual coinfections	42	25	9	6	2
Expected coinfections	44	23	14	6	2
<i>P</i> value	.6934	.7198	.0862	.9989	1 ^a

Total samples include samples collected during weeks where both pathogens of interest were circulating. Pearson χ^2 and Fisher exact tests were used to compare the observed and expected distributions of coinfections.

Abbreviations: HCoV, human coronaviruses (OC43, 229E, NL63, HKU1); hMPV, human metapneumovirus; IA, influenza A; IB, influenza B; RSV, respiratory syncytial virus.

^aIf observed counts <5.

coinfections were no different than expected ($P = .69$, χ^2 test) overall and among all 4 age groups.

DISCUSSION

This prospective, community-based cohort study conducted in Managua, Nicaragua, followed 2575 children between the ages of 0 and 14 years. To our knowledge, this is one of the few studies to assess the community burden of RSV among older children in an LMIC. We found children <2 years old to have the highest rates of symptomatic RSV, rates of RSV-ALRI, and rates of RSV hospitalizations. Among older age groups, RSV incidence, RSV-ALRI, and RSV hospitalizations decreased, with children aged 10–14 years demonstrating the lowest RSV burden.

To appropriately understand these age group differences, it is helpful to first compare our results in the context of previously reported RSV burden in younger children. Among children aged <5 years in LMICs, the incidence of RSV-associated lower respiratory tract infections per 1000 PY was found to be 30 in India, 34 in Indonesia, and 94 in Nigeria [21, 22]. A comprehensive, global review found RSV-ALRI incidence per 1000 PY among children under 5 years old to be 94 in low-income countries, 41 in lower-middle-income countries, and 85 in upper-middle-income countries [23]. These surveillance systems are not uniform between countries, so direct comparisons

are difficult. However, our estimates of RSV-ALRI between 41.3 and 85.9 cases per 1000 PY for children aged <5 years are in line with or higher than previous studies in LMICs.

Interestingly, our ALRI findings among children <2 years old (85.9 RSV-ALRI cases per 1000 PY [95% CI, 71.3–103.6]) are slightly lower than the 119.9 RSV-ALRI cases per 1000 PY (95% CI, 103.2–139.4) we previously found in a Nicaraguan birth cohort among children <2 years old, despite similar overall RSV incidence rates: 248.1 symptomatic RSV cases per 1000 PY in our previous birth cohort and 269.3 symptomatic RSV cases per 1000 PY in our current study [14]. We suspect this is due to the previous birth cohort utilizing active surveillance (ie, weekly home visits), which resulted in more frequent visits to the clinic or home medical visits where ALRI was diagnosed.

Our combined RSV-associated hospitalization rate of 8.99 per 1000 PY for children <5 years old is slightly higher than prior worldwide findings. RSV-associated ALRI hospital admission rates, per 1000 children per year, among children <5 years old, have been estimated to be between 3.5 and 6.2 worldwide in low-income to lower-middle-income countries [3].

We also collected RSV subtype information to help describe differences between initial infections among infants and repeat infections. In line with previous studies [24, 25], we found no clinical differences between RSV-A and RSV-B infections. However, we did find that initial infections were more likely

to result from RSV-A than repeat infections. While this may be the result of RSV-A being the dominant subtype circulating early in the study (when more initial infections occurred), further study is warranted to examine whether the strength and duration of protection following RSV infection differs by subtype.

RSV coinfections during weeks of co-circulation were found to be lower than expected for RSV–influenza A, RSV–influenza B, and RSV–hMPV, possibly suggesting viral interference. Previous studies have found that children aged <5 years, specifically children between 6 and 24 months of age, are the most common victims of viral coinfections [26, 27]. Additionally, Chan et al [28] found that a nonspecific innate immune response by influenza A can reduce or prevent infection and replication by RSV. Influenza also has a higher growth rate than RSV, which may keep RSV viral loads lower during coinfections, possibly below the detection level [29]. Our findings suggest that we are seeing similar resource competition between RSV and other respiratory viruses, leading to fewer detectable coinfections than expected during weeks of pathogen co-circulation.

This study has several strengths, most notably its community-based, longitudinal design, which allowed us to calculate the incidence of RSV and associated outcomes. This study also provides much needed data on the community-level burden of RSV among children in a tropical LMIC, specifically among children older than 5 years. Limitations include likely underestimates of the true burden of RSV, specifically among children aged <2 years, due to our inclusion of fever/feverishness in the criteria for sample collection. Multiple studies have found that inclusion of fever within RSV case definition results in an overall underestimate of infection [30–32]. However, our definition of feverishness does not require a measured fever, and our estimates are in line with other studies that did not use fever in the testing definition [21–23]. Finally, we had some differential loss to follow-up by parent education, which could have biased our results. We conducted a sensitivity analysis and observed minimal change in estimated incidence rates when accounting for parental education, suggesting this was unlikely a substantial source of bias.

This study shows lower RSV incidence, RSV-ALRI, RSV hospitalizations, and RSV mortality among children 5–14 years old compared to children 0–4 years old in Nicaragua. Although the burden of RSV is lower among older children, reinfection is common, and these older children likely play a key role in household transmission. RSV maternal vaccines and infant monoclonal antibodies are currently in phase 3 trials, which, if found effective, would greatly reduce RSV morbidity and mortality worldwide [33]. Given the lower burden of RSV among older children, particularly more severe manifestations, efforts to increase access to high-quality treatments and preventives would be most impactful if children <2 years of age are prioritized.

Supplementary Data

Supplementary materials are available at *Open Forum Infectious Diseases* online. Consisting of data provided by the authors to benefit the reader, the posted materials are not copyedited and are the sole responsibility of the authors, so questions or comments should be addressed to the corresponding author.

Notes

Acknowledgments. The authors thank the study staff at the Health Health Center Sócrates Flores Vivas, the Centro Nacional de Diagnóstico y Referencia, and the Sustainable Sciences Institute for conducting the study, and the children and their families for participating in the study.

Financial support. This work was supported by the National Institutes of Health (grant number U01AI088654 and contract number HHSN272201400006C).

Potential conflicts of interest. A. G. reports serving on a respiratory syncytial virus vaccine scientific advisory board for Janssen Pharmaceuticals and a COVID-19 scientific advisory board for Gilead Sciences, outside the submitted work. All other authors report no potential conflicts.

All authors have submitted the ICMJE Form for Disclosure of Potential Conflicts of Interest. Conflicts that the editors consider relevant to the content of the manuscript have been disclosed.

References

- Shi T, Balsells E, Wastnedge E, et al. Risk factors for respiratory syncytial virus associated with acute lower respiratory infection in children under five years: systematic review and meta-analysis. *J Glob Health* 2015; 5:020416.
- GBD 2017 Causes of Death Collaborators. Global, regional, and national age-sex-specific mortality for 282 causes of death in 195 countries and territories, 1980–2017: a systematic analysis for the Global Burden of Disease Study 2017. *Lancet* 2018; 392:1736–88.
- Li Y, Wang X, Blau DM, et al. Global, regional, and national disease burden estimates of acute lower respiratory infections due to respiratory syncytial virus in children younger than 5 years in 2019: a systematic analysis. *Lancet* 2022; 399:2047–64.
- Butt ML, Symington A, Janes M, Elliott L, Steele S, Paes BA. The impact of prophylaxis on paediatric intensive care unit admissions for RSV infection: a retrospective, single-centre study. *Eur J Pediatr* 2011; 170:907–13.
- Geoghegan S, Erviti A, Caballero MT, et al. Mortality due to respiratory syncytial virus. Burden and risk factors. *Am J Respir Crit Care Med* 2017; 195:96–103.
- Glezen WP, Taber LH, Frank AL, Kasel JA. Risk of primary infection and reinfection with respiratory syncytial virus. *Am J Dis Child* 1986; 140:543–6.
- Hall CB, Walsh EE, Long CE, Schnabel KC. Immunity to and frequency of reinfection with respiratory syncytial virus. *J Infect Dis* 1991; 163:693–8.
- Jacoby P, Glass K, Moore HC. Characterizing the risk of respiratory syncytial virus in infants with older siblings: a population-based birth cohort study. *Epidemiol Infect* 2017; 145:266–71.
- Heikkinen T, Valkonen H, Waris M, Ruuskanen O. Transmission of respiratory syncytial virus infection within families. *Open Forum Infect Dis* 2015; 2:ofu118.
- Crowcroft NS, Zambon M, Harrison TG, Mok Q, Heath P, Miller E. Respiratory syncytial virus infection in infants admitted to paediatric intensive care units in London, and in their families. *Eur J Pediatr* 2008; 167:395–9.
- Anderson J, Do LAH, Wurzel D, et al. Severe respiratory syncytial virus disease in preterm infants: a case of innate immaturity. *Thorax* 2021; 76:942–50.
- Shang Z, Tan S, Ma D. Respiratory syncytial virus: from pathogenesis to potential therapeutic strategies. *Int J Biol Sci* 2021; 17:4073–91.
- Wang X, Li Y, Mei X, Bushe E, Campbell H, Nair H. Global hospital admissions and in-hospital mortality associated with all-cause and virus-specific acute lower respiratory infections in children and adolescents aged 5–19 years between 1995 and 2019: a systematic review and modelling study. *BMJ Glob Health* 2021; 6:e006014.
- Kubale J, Kuan G, Gresh L, et al. Assessing the incidence of symptomatic respiratory syncytial virus illness within a prospective birth cohort in Managua, Nicaragua. *Clin Infect Dis* 2020; 70:2029–35.
- United Nations. World population prospects 2022, online edition. New York: Department of Economic and Social Affairs Population Division; 2022.
- Gordon A, Kuan G, Aviles W, et al. The Nicaraguan Pediatric Influenza Cohort Study: design, methods, use of technology, and compliance. *BMC Infect Dis* 2015; 15:504.

17. Gordon A, Saborío S, Videá E, et al. Clinical attack rate and presentation of pandemic H1N1 influenza versus seasonal influenza A and B in a pediatric cohort in Nicaragua. *Clin Infect Dis* **2010**; 50:1462–7.
18. Fry AM, Chittaganpitch M, Baggett HC, et al. The burden of hospitalized lower respiratory tract infection due to respiratory syncytial virus in rural Thailand. *PLoS One* **2010**; 5:e15098.
19. Kuypers J, Wright N, Morrow R. Evaluation of quantitative and type-specific real-time RT-PCR assays for detection of respiratory syncytial virus in respiratory specimens from children. *J Clin Virol* **2004**; 31:123–9.
20. World Health Organization (WHO). Guidance for sentinel influenza surveillance in humans. Copenhagen: WHO Regional Office for Europe; **2011**.
21. Krishnan A, Kumar R, Broor S, et al. Epidemiology of viral acute lower respiratory infections in a community-based cohort of rural north Indian children. *J Glob Health* **2019**; 9:010433.
22. Robertson SE, Roca A, Alonso P, et al. Respiratory syncytial virus infection: denominator-based studies in Indonesia, Mozambique, Nigeria and South Africa. *Bull World Health Organ* **2004**; 82:914–22.
23. Shi T, McAllister DA, O'Brien KL, et al. Global, regional, and national disease burden estimates of acute lower respiratory infections due to respiratory syncytial virus in young children in 2015: a systematic review and modelling study. *Lancet* **2017**; 390:946–58.
24. Gamiño-Arroyo AE, Moreno-Espinosa S, Llamosas-Gallardo B, et al. Epidemiology and clinical characteristics of respiratory syncytial virus infections among children and adults in Mexico. *Influenza Other Respir Viruses* **2017**; 11: 48–56.
25. Fletcher JN, Smyth RL, Thomas HM, Ashby D, Hart CA. Respiratory syncytial virus genotypes and disease severity among children in hospital. *Arch Dis Child* **1997**; 77:508–11.
26. Goka E, Valley P, Mutton K, Klapper P. Influenza A viruses dual and multiple infections with other respiratory viruses and risk of hospitalisation and mortality. *Influenza Other Respir Viruses* **2013**; 7:1079–87.
27. Martin ET, Kuypers J, Wald A, Englund JA. Multiple versus single virus respiratory infections: viral load and clinical disease severity in hospitalized children. *Influenza Other Respir Viruses* **2012**; 6:71–7.
28. Chan KF, Carolan LA, Korenkov D, et al. Investigating viral interference between influenza A virus and human respiratory syncytial virus in a ferret model of infection. *J Infect Dis* **2018**; 218:406–17.
29. Pinky L, Dobrovolny HM. Coinfections of the respiratory tract: viral competition for resources. *PLoS One* **2016**; 11:e0155589.
30. Nyawanda BO, Mott JA, Njuguna HN, et al. Evaluation of case definitions to detect respiratory syncytial virus infection in hospitalized children below 5 years in rural western Kenya, 2009–2013. *BMC Infect Dis* **2016**; 16:218.
31. Saha S, Pandey BG, Choudekar A, et al. Evaluation of case definitions for estimation of respiratory syncytial virus associated hospitalizations among children in a rural community of northern India. *J Glob Health* **2015**; 5:010419.
32. Rha B, Dahl RM, Moyes J, et al. Performance of surveillance case definitions in detecting respiratory syncytial virus infection among young children hospitalized with severe respiratory illness—South Africa, 2009–2014. *J Pediatric Infect Dis Soc* **2019**; 8:325–33.
33. Srikantiah P, Vora P, Klugman KP. Assessing the full burden of respiratory syncytial virus in young infants in low- and middle-income countries: the importance of community mortality studies. *Clin Infect Dis* **2021**; 73:S177–S9.